

TOMINI USV



**PT ROBO MARINE
INDONESIA**

(+62) 22 8200-5832
(+62) 82-120-754-129

contact@robomarine.com

FEATURES TOMINI

Desain

- Ultra compact (49cm length x 20 cm height)
- backpack/transport bag friendly
- large payload up to 1.5 kg
- waterproof dual motor propulsion
- Fully enclosed hull, multi-layer closed structure to prevent hull leakage

Remote Telemetry

- Realtime Control
- Realtime data monitoring
- 500-meter range
- NMEA data protocol

GNSS

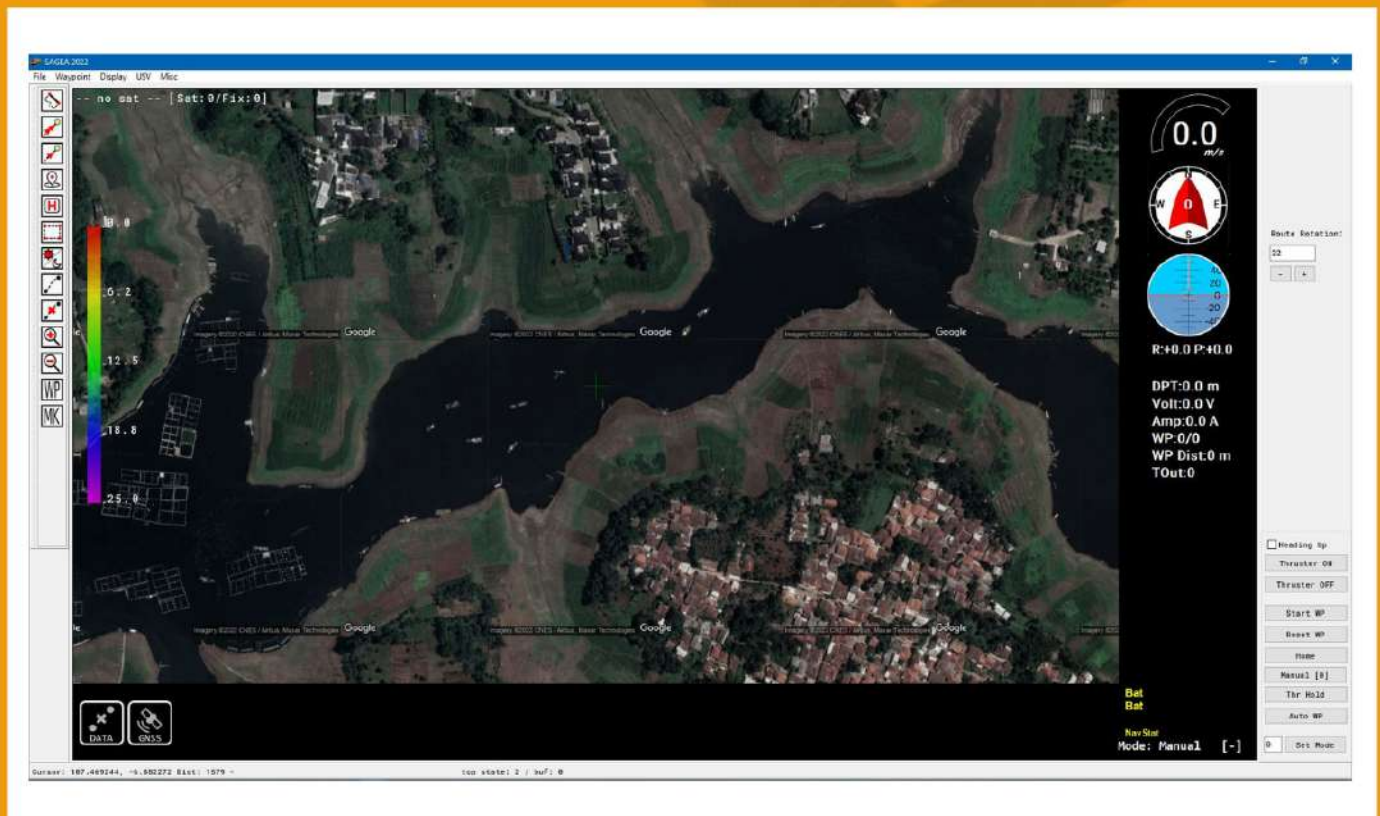
- RTK differential with centimeter-level accuracy
- GPS, Galileo, GLONASS, BDS
- Up to 20Hz update rate

Battery

- Large Capacity Rechargeable Battery
- 2 hours Long battery life

Sensor

- Single-beam echosounder
- Measurement range 0.3-100 meters
- Frequency 115 KHz



+62 82-120-754-129



Contact@robomarine.com